



ASHTON SCAFFOLDING SERVICES LTD
ENVIRONMENTAL POLICY
April 2023

(REVIEWED April 2023 BY THE BUILDING SAFETY GROUP)

Contents:

Environmental Policy Statement

Organisational Responsibilities

- 2.1 Organisation
- 2.2 Responsibilities of the Director
- 2.3 Responsibilities of Consultants
- 2.4 Responsibilities of Supervisors
- 2.5 Responsibilities of Employees

Arrangements

- 3.1 Aims and objectives
- 3.2 Air
- 3.3 Communication
- 3.4 Contaminated land
- 3.5 Energy conservation
- 3.6 Noise
- 3.7 Office waste
- 3.8 Purchasing
- 3.9 Recycling
- 3.10 Training
- 3.11 Water
- 3.12 Waste

1. Environmental Policy Statement

ENVIRONMENTAL POLICY STATEMENT

ISSUE DATE: April 2023

Environmental issues are increasingly achieving significance in all aspects of our lives, both private and business. Ashton Scaffolding Services Ltd is fully committed to the prevention of pollution protecting and minimising the effects of operations on the environment, therefore Ashton Scaffolding Services Ltd will, where required comply with legislation and other obligations to fulfil our Environmental Policy.

We at Ashton Scaffolding Services Ltd fully recognise the importance of these issues and have taken, and will continue to take, all steps to ensure that we are aware of current legislation.

We further confirm that we will ensure that all activities of the company together with its suppliers and Sub-contractors comply fully with the environmental legislation.

We will co-operate fully with and carry out the requirements of the Environmental Agency, Local authorities, Water Companies and where applicable Railway Regulations.

Ashton Scaffolding Services Ltd aims to reduce the impact of their business on the Environment and to improve quality of life by careful application of the following policies:

- . Meet all necessary legal and regulatory requirements, in so far as they pertain to our business
- . Provide a well-structured and organised approach to site organisation
- . Clearly determine the requirement of the environmental management and assign responsibility to site personnel
- . Constantly monitors environmental management aspects on site in respect to our impact and nature of works, and record any environmental issues.
- . Manage our activity on sites in an environmentally sensitive manner
- . Operate a thoughtful buying policy selecting, whenever practical, alternative products, materials and services which cause less damage to the environment.
- . Promoting recycling materials wherever possible
- . Minimise waste and reduce consumption of materials
- . Use materials where possible that are gleaned from renewable sources
- . Ensure compliance with regulations for noise, waste disposal and energy use
- . Use methods of construction that are sympathetic to the environment
- . Communicate environmental policies to all our staff
- . Continually improve environmental awareness in the light of new research and developments.
- . Minimise or eliminate polluting substances, using alternative substances with less or no impact on the environment
- . Review this policy annually
- . Make the contents of this policy available to customers and the public

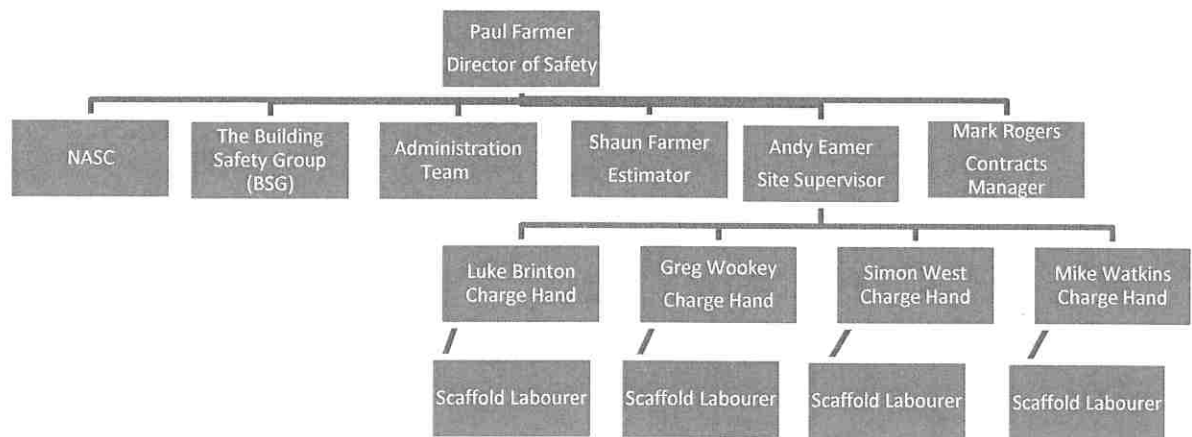
For and on behalf of
Ashton Scaffolding Services Ltd



Mr Paul Farmer, Director

1 April 2023

2.0 Organisation Chart



2.1 The responsibilities of the director Mr P Farmer

Mr P Farmer has overall responsibility for ensuring that all employees understand their role, accountability and involvement in contributing to meeting the aims and objectives of the company's environmental policy

Further responsibilities:-

- . To ensure that an environmental policy has been prepared and to ensure that the policy is reviewed at regular intervals
- . To ensure that the organisations vision and direction in relation to environmental aspects is consistent with current socio-economic factors
- . To agree and endorse the environmental policy and corporate objectives of Ashton Scaffolding Services Ltd
- . To develop policy commitments, review action plans and environmental targets
- . To ensure that the organisation complies with all statutory legal requirements
- . To monitor environmental performance and internal procedures
- . To ensure regulatory compliance and continual improvement in all environmental aspects
- . To maintain an environmentally aware workforce

2.2 The responsibilities of Consultants

- To provide professional advice and support to Ashton Scaffolding Services Ltd on environmental issues aspects and legislation
- To develop, when requested, environmental procedures, programmes and achievable targets
- To monitor environmental, procedures and systems within the company
- To review and identify weakness and make appropriate recommendations to Mr P Farmer
- To inform Mr P Farmer of any relevant changed to environmental legislation and industry guidance

2.3 The responsibilities of Managers / Supervisors

- To comply with all procedures, work to achieve compliance with environmental legislation and to strive for continual improvement
- To promote the company's environmental policy and general awareness of the adverse environmental impacts
- To ensure employees are informed and aware of any specific environmental aspects of their work activities
- To ensure employees undertake work processes in accordance with the company policy and any training received

2.4 The responsibilities of Employees

- To comply with all internal company procedures, work to achieve compliance with environmental legislation and to strive for continual improvement
- To promote the company's environmental policy and general awareness of the adverse environmental impacts
- To ensure work processes are undertaken in accordance with the company's policy
- To inform the company of any areas of environmental issues that may give rise to concern

Arrangements

3.1 Aims & objectives

The aim and objectives of Ashton Scaffolding Services Ltd, are to ensure that the environmental aspects of the company's undertakings do not have any adverse environmental impact

Where it is not possible to eliminate the impact, to reduce or minimise the environmental impact by use of recycling, waste separation and other techniques

Ashton Scaffolding recognises that an essential management principle is that objectives and targets are

- . Objectives and targets should be clear in their intention and results
- . All individuals should have the opportunity to contribute and comment on it
- . Objectives should be achievable in relation to resources available and other business priorities

3.2 Air

The burning of wood waste or scrub during site clearance is prohibited due to health, safety and environmental reasons

Ashton Scaffolding Ltd will ensure that site mobile machinery (if applicable) meets the emissions of gaseous and particulate pollution levels outlined in various E.U directives.

Dust will be reduced as far as is practicable by the enclosure of works with plastic sheeting. Most works are undertaken in the open air and, except in high winds or unusual locations, fumes and dust are only likely to affect those in the immediate vicinity

3.3 Communication

Effective two-way communication between employees at all levels is seen by Ashton Scaffolding as an important part of ensuring the protection of the environment. Ashton Scaffolding will work with all persons affected by their undertakings to ensure that information on environmental aspects and impacts are shared

Communication with employees will take various forms and employees are reminded that they may raise any health and safety issues with any member of management in total confidence. Employees are actively encouraged to raise any concerns they may have in relation to environmental aspects.

3.4 Contaminated Land

Site investigations will be undertaken by the Client prior to the commencement of works with the results communicated by the principal contractors construction phase health and safety plan or by the CDM co-ordinators pre-tender health and safety plan.

Should the details of a survey not be supplied and it is suspected that pollution is present at the commencement of works the client or CDM co-ordinator will be contacted to arrange a decontamination operation or asked to provide an adequate survey.

3.5 Energy conservation

Increasing energy costs, coupled with both national and governmental needs for energy conservation, has resulted in energy management being regarded as an important task in all of the work activities undertaken by Ashton Scaffolding Services Ltd

Energy saving requirements may also involve such things as ensuring a piece of plant has completed all necessary tasks before being withdrawn from a project as its return to site at a later date will result in poor logistic management and added pollution

All persons involved at the planning or tendering stage of projects will fully consider all possible areas of energy reduction and conservation.

3.6 Noise

Ashton Scaffolding Services Ltd will undertake to work within the parameters outlined by the Principal contractor or the local authority to restrict noisy activities to the time periods requested.

Ashton Scaffolding Ltd will undertake to act pro-actively, to ensure the elimination of unnecessary noise and to reduce noise that is produced to an acceptable level.

Best available technique will be used to prevent the effect of noise to the limit reasonably practicable having regard to the local conditions and circumstances, to the current state of technical knowledge and to the financial implications.

3.7 Office waste

Through careful and efficient office management and the implementation of a quality system, the amount of waste created is kept to an absolute minimum. Ashton Scaffolding Services Ltd is also promoting the recycling of office waste wherever possible.

Electrical energy is conserved by the use of e=high efficiency, fluorescent lighting which is switched off in rooms, which are not in use. Heating system is serviced and maintained.

3.8 Purchasing

Ashton Scaffolding Services Ltd will ensure that our wholesalers and suppliers provide us and our customers, with goods and materials that have limited environmental impact where possible. The aim of the Company is to achieve this by:-

- . Purchasing goods, plant and materials, which can be manufactured used and disposed of in an Environmentally responsible way.
- . Meeting, where appropriate, the standards required by all environmental legislation
- . Specifying and purchasing of plant and items, which will, in the first instance, have a long working life and can be recycled when the service life has ended.
- . Specify, and purchasing items which can be operated in an energy efficient manner
- . Specify and purchasing items that are of the best quality, have replacement parts and are not part of the "throw away" culture
- . Selecting supplier and contractors who are themselves undertaking measures to make Environmental improvements
- . Purchasing equipment with due consideration of noise, emissions and vibration produced
- . The negotiation of favourable rates from water, gas and electrical service providers
- . We purchase our timber scaffold boards from companies that import from areas that are Pro-active towards a culture of sustainable growth and replanting programs

3.9 Recycling

Ashton Scaffolding Services Ltd as a company is committed to minimising all waste in its operations and works. Where waste may be produced, every effort will be made to recycle such materials e.g. damage or broken scaffold boards will be reduced in length and the ends re-banded.

3.10 Training

All employees will be given training in general environmental awareness, task specific procedures and methods that will be used to reduce or minimise the impact to the environment by the undertakings of the company.

The Building Safety Group will assist Mr P Farmer in identifying training needs throughout the company, preparing appropriate training programmes and delivering those programmes to employees through external training companies

3.11 Water

The employees of Ashton Scaffolding Services Ltd are aware of the importance to protect the integrity of groundwater, rivers, lakes and other elements of the water system. The company recognises duties under the groundwater regulations 1999, anti-pollution works regulations 1999 and the water resources act 1991.

In particular section 85 of the water resources act 1991, which states that 'no person shall cause, or knowingly permit any poisonous, noxious or toxic material or solid waste to enter controlled water. Causing means not only deliberately releasing any polluting matter but also causing the pollution accidentally, by being the operator of a plant or process.

Where necessary to prevent water pollution, drain covers, self-contained water systems and other methods will be used. Detergents and solvents are to be as environmentally friendly as possible and where not possible Ashton Scaffolding Services Ltd will ensure that the migration of substances does not adversely impact on the environment.

3.12 Waste

Ashton Scaffolding Services Ltd will use the waste management approach to as outlined below:-

- . Reduce the amount of waste produced to a minimum
- . Re-use and recycle, wherever reasonably practicable
- . Responsible disposal of waste, including waste segregation wherever possible

This will be achieved by identification of:-

- . Sources / processes of losses and waste
- . Quantities, quality and type of waste
- . Opportunities for re-use and recycling

Ashton Scaffolding Services Ltd recognises their duty of care in accordance with the environmental protection act 1990, the special waste regulations 1996 and other associated statutory provisions

Controlled waste will only be released to a licensed carrier after proof has been produced by the authorised person all parts of the waste transfer note will be suitably completed with a copy remaining with Ashton Scaffolding Services Ltd for 2 years, where applicable

Special waste will only be removed by a licensed special waste carrier after the completion of a special waste transfer note and the pre-notification of these movements to the environmental agency, copies of which will be kept by Ashton Scaffolding Services Ltd for 3 years, where applicable

Environmental Legislation

The following table lists all relevant environmental legislation that applies to Ashton Scaffolding Services
(Also see Construction Environmental Manual – Registration of Legislation ASH94-01):

Air Pollution
Statutory Nuisance (Appeals) Regulations 1995 Clean Air Act 1993 Clean Air (Emission of Dark Smoke) (Exemption) Regulations 1969 Road Vehicles (Construction & Use) Regulations 1986 (as amended) Town & Country Planning (Environmental Impact Assessment) (England and Wales) Regulations 1999 Environmental Protection Act 1990, Part I and III, ss. 79-84 Environmental Protection (Prescribed Processes and Substances) Regulations 1991 (SI 1991 No. 472) Environmental Protection (Applications, Appeals and Registers) Regulations 1991 (SI 1991 No. 507), as amended Environment Act 1995, Part IV The Pollution Control and Local Government (Northern Ireland) Order 1978, section 40
Contaminated Land
Environmental Protection Act 1990, Part I and IIA Environmental Protection (Prescribed Processes and Substances) Regulations 1991 (SI 1991 No. 472) Environmental Protection (Applications, Appeals and Registers) Regulations 1991 (SI 1991 No. 507), as amended Environment Act 1995, Part II Water Resources Act 1991 Anti-Pollution Works Regulations 1999 Contaminated Land (England) Regulations 2000 Town & Country Planning (Environmental Impact Assessment) (England and Wales) Regulations 1999 Water Act 2003 Waste and Contaminated Land (Northern Ireland) Order 1997 Section 5 The Pollution Control and Local Government (Northern Ireland) Order 1978, section 40
Ecology, Archaeology & Cultural Heritage
Town & Country Planning Act 1991 Town & Country Planning (Trees) Regulations 1999 Planning (Listed Buildings & Conservation Areas) Regulations 1990 Wildlife & Countryside Act 1981 Ancient Monuments & Archaeological Areas Act 1979 Hedgerow Regulations 1997 Conservation (Natural Habitats) Regulations 1994 Protection of Badgers Act 1992 Countryside & Rights of Way Act 2000
Landfill

<p>Landfill Tax Regulations 1996 (SI 1996 No. 1527)</p> <p>The Landfill (England & Wales) Regulations 2002</p> <p>The Landfill Directive (1999)</p>
Noise and Vibration
<p>Environmental Protection Act 1990, ss. 79-84, part I & III</p> <p>Control of Pollution Act 1974, section 60/61</p> <p>Pollution Prevention and Control Act 1999</p> <p>Control of Noise (Code of Practice for Construction and Open Sites) Order 1984 (SI 1984 No. 1992)</p> <p>Control of Noise (Code of Practice for Construction and Open Sites) Order 1987 (SI 1987 No. 1730)</p> <p>BS 5228: Noise Control on Construction & Open Sites</p> <p>Town & Country Planning Act 1990</p> <p>Noise & Statutory Nuisance Act 1993</p> <p>Control of Noise (Appeals) Regulations 1975</p> <p>Construction Plant & Equipment (Harmonisation of Noise Emissions Standards) Regulations 1985 & 1987</p> <p>Noise Insulation Regulations 1975 (SI 1975 No. 1763)</p> <p>Noise Insulation (Scotland) Regulations 1975 (SI 1975 No. 460)</p> <p>Town & Country Planning (Environmental Impact Assessment) (England and Wales) Regulations 1999</p>
Planning
<p>Noise and Statutory Nuisance Act 1993</p> <p>Town and Country Planning (Assessment of Environmental Effects) Regulations 1988 (SI 1988 No. 1199)</p> <p>Planning (Hazardous Substances) Regulations 1992 (SI 1992 No. 656)</p> <p>Town and Country Planning (Hazardous Substances) (Scotland) Regulations 1993 (SI 1993 No. 323).</p> <p>Planning (Hazardous Substances) Act 1990</p> <p>Town and Country Planning (Scotland) Act 1972</p>
Statutory Nuisance
<p>Environmental Protection Act 1990, Part III</p> <p>Noise & Statutory Nuisance Act 1993</p> <p>Statutory Nuisance (Appeals) Regulations 1995</p> <p>Town & Country Planning (Environmental Impact Assessment) (England and Wales) Regulations 1999</p>
Traffic Management
<p>Highways Act 1980</p> <p>Town & Country Planning Act 1990</p> <p>Road Vehicles (Construction and Use) Regulations 1986</p> <p>Common Law</p> <p>Construction Plant & Equipment (Harmonisation of Noise Emissions Standards) Regulations 1985 & 1987</p> <p>Town & Country Planning (Environmental Impact Assessment) (England and Wales) Regulations 1999</p>
Waste
<p>Waste (England & Wales) Regulations 2011</p> <p>Controlled Waste Regulations 1992</p> <p>Waste Management Licensing (Amendment) Regulations 1997</p>

Environment Act 1995 - Part II (Replacing Part I of Control of Pollution Act 1974) Landfill Tax (Contaminated Land) Order 1996
 Town & Country Planning (Environmental Impact Assessment) (England and Wales) Regulations 1999
 Environmental Protection Act 1990, Part II and IV
 Waste Management Licensing Regulations 1994 (SI 1994 No. 1056) Control of Pollution (Amendment) Act 1989
 Controlled Waste (Registration of Carriers and Seizure of Vehicles) Regulations 1991 (SI 1991 No. 1624)
 Waste and Contaminated Land (Northern Ireland) Order 1997 Section 5
 The Hazardous Waste (England and Wales) Regulations 2005 (SI 2005 No. 894) Clean Neighbourhoods and Environment Act 2005
 Waste (England & Wales) (Amendment) Regulation 2012 – to collect waste separately
 Waste (England & Wales) (Amendment) Regulation 2014 - use of other documentation to be used to provide waste transfer information instead of having to use a waste transfer note

Water Pollution

Landfill Tax (Qualifying Material) Order 1996 (SI 1996 No. 1528)
 Water Industry Act 1991 (for England and Wales)
 Sewerage (Scotland) Act 1968
 Water Resources Act 1991 (for England and Wales)
 Anti-Pollution Works Regulations 1999
 Control of Pollution (Applications, Appeals & Registers) Regulations 1996
 Environmental Protection Act 1990, Part I
 Environmental Protection (Prescribed Processes and Substances) Regulations 1991 (SI 1991 No. 472)
 Environmental Protection (Applications, Appeals and Registers) Regulations 1991 (SI 1991 No. 507), as amended
 Groundwater Regulations 1998
 Control of Pollution (Oil Storage) (England) Regulations 2001
 Salmon & Freshwater Fisheries Act 1975
 Water Act 2003
 Town & Country Planning (Environmental Impact Assessment) (England and Wales) Regulations 1999
 Town & Country Planning Act 1991
 The Pollution Control and Local Government (Northern Ireland) Order 1978, section 40